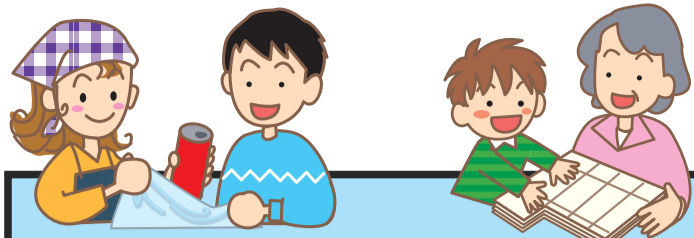


Please keep this chart and put it on your wall, because it will also be used next year.



How to separate and put out your garbage



Collected garbage

BURNABLES	PLASTIC CONTAINERS & PACKAGING	PET BOTTLES	NON-BURNABLES	GLASS BOTTLES	CANS
<ul style="list-style-type: none"> ■ Kitchen garbage (refuse) ■ Cloth, leather items ■ Paper ■ Plastics without the marks ■ Other burnables 	<ul style="list-style-type: none"> ■ Plastic containers and packaging bearing the identification mark: 	<ul style="list-style-type: none"> ■ Plastic water bottles, soy sauce bottles etc. bearing the identification mark: 	<ul style="list-style-type: none"> ■ Ceramics, porcelain etc. ■ Lightbulbs ■ Pots, pans, metals objects etc. ■ Glass tableware, cups ■ Heat-resisting glass ■ Make-up bottles ■ Spray cans ■ 18-ltr drums, polyester tanks ■ Milk cans, candy cans ■ Metal lids 	<ul style="list-style-type: none"> ① Clear transparent ② Brown ③ Other colors (black, blue, green etc.) 	<ul style="list-style-type: none"> Food cans Juice cans Beer cans
<ul style="list-style-type: none"> ■ Wet items - Please drain first. ■ Cooking oil - Please soak up with pieces of cloth or newspaper sheet. ■ Diapers - Please empty and flush contents down the toilet. ■ Metal parts - Please remove and put in Non-burnables. <p>PLEASE TURN ALL NATURAL GARBAGE LIKE VEGETABLES, GRASS, WOOD AND LEAVES INTO COMPOST. THAT CAN BE USED FOR GROWING VEGETABLES.</p>	<ul style="list-style-type: none"> ■ Please rinse off any dirt which may cause a smell or build-up of gasses. ■ Please remove all caps and lids, since this garbage will be compressed. ■ Please read the disposal instructions and identification mark on new products very carefully. <p>DO NOT WRAP ANY INDIVIDUAL ITEMS WITHIN THIS BAG. SINCE THIS CANNOT BE PROCESSED!</p>	<ul style="list-style-type: none"> ■ Plastic caps/labels - Please remove and put in the Plastic Containers & Packaging bag. ■ Please rinse the inside, drain off the water and squash lightly. ■ Pet bottles will be recycled into clothes, containers etc. 	<ul style="list-style-type: none"> ■ Spray cans and gas bottles should be completely emptied of any gas before disposal. Do not puncture them before disposal. ■ Items containing metal are considered Non-burnables. ■ Since personal computers fall under the "Law for Promotion of Effective Utilization of Resources", they cannot be handed in as garbage. 	<ul style="list-style-type: none"> ■ Please put out the bottles in three separate bags, i.e. clear transparent bottles, brown bottles and other-colored bottles. ■ Please take off the caps and rinse the inside. ■ Please separate painted bottles based on the colour of the bottle mouth. ■ Please peel off the labels that are easy to remove. 	<ul style="list-style-type: none"> ■ Caps & lids - Please remove. ■ Please empty and rinse the inside. ■ Do not put in any needles, skewers, cigarette ash/butts etc. <p>DO NOT CRUSH!</p> <p>KEEP THE INSIDE CLEAN!</p>
Please collect in the Burnables bag (Moyaseru Gomi Senyō Bukuro)	Please collect separately in Plastic Containers & Packaging bags (Purasuchikku Yōki Hōsō Senyō Bukuro)		Please collect in the Non - burnables bag (Moyasenai Gomi Senyō Bukuro)	Please collect separately in Empty Bottles bags (Akibin Senyō Bukuro)	Please collect in the Empty Cans bag (Akikan Senyō Bukuro)

☆ On collection days, please put out your garbage on the allocated spot before 08:30 am that day.

Collected garbage	Garbage you have to bring yourself	Garbage that cannot be collected		
<h3>PAPER</h3> <ol style="list-style-type: none"> ① Carton boxes ② Newspapers, pamphlets ③ Magazines, books, paper boxes ④ Milk/juice cartons 	<h3>BIG ITEMS</h3> <ul style="list-style-type: none"> ■ Pieces of furniture (chests, desks, sofas etc.) ■ Metal items (bicycles, kerosine stoves, gas heaters etc.) ■ Bedding (futon, beds, carpets etc.) ■ House fittings (Tatami mats, Shōji/Fusuma sliding doors etc.) ■ Electrical equipment (vacuum cleaners, fan heaters etc.) excl. items falling under the Home Appliance Recycling Law or the Law for Promotion of Effective Utilization of Resources ■ Others (kitchen sinks, organs etc.) <p>FOR LARGER QUANTITIES: PLEASE CONTACT US IN ADVANCE! PLEASE DO NOT DISASSEMBLE!</p>	<h3>ITEMS FALLING UNDER THE HOME APPLIANCE RECYCLING LAW</h3>	<h3>ITEMS FALLING UNDER THE PROMOTION OF EFFECTIVE UTILIZATION OF RESOURCES LAW</h3> <p>PC リサイクル PC Recycle Logo</p>	<h3>DIFFICULT ITEMS</h3>
<ul style="list-style-type: none"> ■ Please put out your paper according to these 4 categories (tie the packages together with, preferably natural, rope). ■ Always put out your paper uncovered (not in plastic bags), even when it rains. ■ Milk/juice cartons with a silver lining inside are considered Burnables. ■ Please do not tie too much paper together in one package. ■ Paper items covered with tape, cellophane, carbon paper or some plastic coating are considered Burnables. 	<p>Bringing in garbage</p> <ul style="list-style-type: none"> ■ Please take your big items to Clean Center Mima for disposal (at a small disposal fee). <p>Clean Center Mima Address: Mima-shi, Wakimachi, Shinmachi 222 Tel.: 52-2496 Open: weekdays 09:00 - 16:00 (excl. national holidays & the end/beginning of the year)</p> <p>If bringing in garbage is difficult</p> <ul style="list-style-type: none"> ■ In principle, all big items should be brought in by the owner, but in case that bringing in garbage is difficult, please follow the next procedure: <ol style="list-style-type: none"> 1. File an application at the City Hall. 2. Pay the disposal fee and receive a Collection Sticker (Shūshū Shiiru). 3. You will receive a notice by telephone, etc., of the collection date. 4. On the date of collection, put the Collection Sticker on the item and put it out in front of your house (in a place that our 2-ton truck can access). 	<ul style="list-style-type: none"> ■ Please take the above items to a consumer electronics store for disposal (at a small disposal fee). ■ It is also possible to pay the disposal fee at the Post Office, after which you are asked to take the item to a specified location. <p>PLEASE DO NOT DUMP THESE ITEMS ILLEGALLY! THE PENALTY FOR THIS COULD BE: UP TO 5 YEARS IMPRISONMENT OR UP TO ¥1,000,000 IN FINES OR A COMBINATION OF BOTH.</p>	<ul style="list-style-type: none"> ■ For disposal of one of these items, please follow the next procedure: <ol style="list-style-type: none"> 1. Contact the maker. 2. Use the form sent by the maker and pay the Collection & Recycling Fee (Kaishū Sai-shigenka Ryōkin). 3. You will receive a You-Pack Delivery Slip (Yūpaku Denpyō) per mail. 4. Stick this slip on the boxed item and bring it to the nearest Post Office with a parcel delivery service, or request the Post Office to come and pick up the item. <p>If the item bears a PC Recycle Logo and the maker still exists, you will receive the You-Pack Delivery Slip quickly.</p>	<ul style="list-style-type: none"> ■ Alkaline/Manganese batteries - Please hand these in your at the Clean Center Mima or deposit them in the collection box at the City Hall. ■ Lithium/Nickel-Cadmium (rechargeable) batteries - Please deposit these in the collection box present in several stores. ■ Syringes, needles, intravenous drip tubes/bags - Please cover all sharp parts with the appropriate cap and hand them in at the hospital of origin. ■ Cars, motorbikes - Please dispose of these in accordance with the Automobile Recycling Law or Motorbike Recycling System. ■ Other items - Please dispose of these properly by contacting the sales-point or an appropriate specialist.

☆ Sometimes the garbage cannot be collected due to typhoons, earthquakes, heavy snowfall and such.

☆ If there is a "storm warning" (Bōfū Keihō) on the collection date, it will be postponed until the next scheduled time.